

Little Sunbeams Preschool
A Reggio Emilia Inspired School

Little Sunbeams Preschool is located at
4850 N. Litchfield Road; Litchfield Park, AZ.
We are open Monday through Friday from 6:30am to 6:00pm.

We service: **Early Preschoolers:** **2 year-olds**
 Preschool: **3 year-olds**
 Pre-Kindergarten: **4 year-olds**

SCHEDULE OPTIONS

TRADITIONAL: full days (8:00-4:00) or half days (8:00-12:00 OR 11:30-3:30)

- A. Monday through Friday (up to 184 days per year)
- B. Monday, Wednesday, Friday (108 days per year)
- C. Tuesday, Thursday (78 days per year)

CUSTOMIZED (for additional fees)

- 2 to 5 days per week, any days, any time (8 hrs) between 6:30-6:00
- Extended hours (1 hr limit for half day schedules)
- Drop-in rates (upon availability)

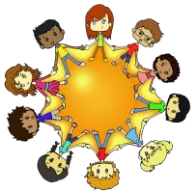
Tuition policies

- Registration fee is \$100 per family
- One full month's tuition plus the registration fee is due at the time of registration. The registration fee is non-refundable.
- \$45 fee for any changes made to enrollment after registration
- \$15 late payment fee
- Missed days or hours are not credited for preschool tuition or extended care rates
- 10% discount for tuition paid for the year
- 10% discount for multiple child and military
- 10% discount for Little Sunbeams Preschool Employees
- Tuition and Extended care payment is due on the first school day of the month.
- Only one discount applies per family.

Where every child shines in 100 ways and more!

4850 N. Litchfield Road, Suite 105 | Litchfield Park, AZ 85340 | (623) 935-0422 | www.mylittlesunbeams.com | info@mylittlesunbeams.com

Revised: November 2014



Little Sunbeams Preschool
A Reggio Emilia Inspired School

MISSION

Little Sunbeams Preschool is committed to helping children in Litchfield Park and its surrounding communities experience daily success. Our aim is to provide caring adults, an inviting environment, and child-centered activities in order to equip children with a love for learning and with an ability to make learning visible in their own unique way.

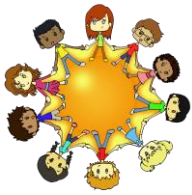
Philosophy

Little Sunbeams Preschool believes that children can make learning visible in a hundred ways and more. When children are encouraged to explore and develop their own way for learning, children gain confidence, experience success, and therefore shine in their own way! This philosophy is inspired by the world-renown Reggio Emilia approach, named after the city in northern Italy where it originated. Loris Malaguzzi, the founder of the Reggio-Emilia approach illustrates this philosophy in his poem.

Where every child shines in 100 ways and more!

4850 N. Litchfield Road, Suite 105 | Litchfield Park, AZ 85340 | (623) 935-0422 | www.mylittlesunbeams.com | info@mylittlesunbeams.com

Revised: November 2014



Little Sunbeams Preschool
A Reggio Emilia Inspired School

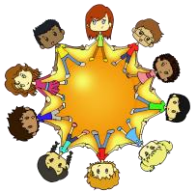
The Hundred Languages of Childhood

The child is made of one hundred.
The child has a hundred languages, a hundred hands, a hundred thoughts,
a hundred ways of thinking, of playing, of speaking.
A hundred, always a hundred ways of listening, of marveling of loving
A hundred joys for singing and understanding
A hundred worlds to discover, a hundred worlds to invent, hundred worlds to dream
The child has a hundred languages
(and a hundred hundred hundred more)
But they steal ninety-nine.
The school and the culture
Separate the head from the body.
They tell the child to think without hands, to do without head,
to listen and not to speak, to understand without joy
To love and to marvel only at Easter and Christmas
They tell the child to discover the world already there and of the hundred
They steal ninety-nine.
They tell the child that work and play, reality and fantasy, Science and imagination,
Sky and earth, reason and dream
Are things that do not belong together
And thus they tell the child
That the hundred is not there

Where every child shines in 100 ways and more!

4850 N. Litchfield Road, Suite 105 | Litchfield Park, AZ 85340 | (623) 935-0422 | www.mylittlesunbeams.com | info@mylittlesunbeams.com

Revised: November 2014



Little Sunbeams Preschool
A Reggio Emilia Inspired School

The child says: NO WAY the hundred is there--

Ten Curriculum Foundations

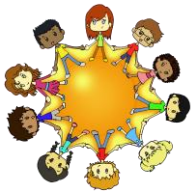
In order to fulfill its mission, Little Sunbeams builds and incorporates a curriculum based on the following ten foundations:

1. Children are capable of demonstrating, storing, and organizing learning in various ways and levels.
2. Children are capable of choosing how they learn.
3. Every child is unique and has the ability to impact the learning of others.
4. Parents are the child's first teachers.
5. Parents are capable of impacting learning in schools.
6. Classroom teachers are observers, documenters, and facilitators.
7. Classroom teachers develop learning experiences based on student interests.
8. The environment is the child's third teacher.
9. A safe, clean, organized, and beautiful environment enhances the learning process for children.
10. Children, parents, and teachers can make learning visible each day through various mediums (languages), such as drawings, paintings, sculpture, role-playing, poetry, writing, singing, interactive journaling, and constructions, to name a few.

Where every child shines in 100 ways and more!

4850 N. Litchfield Road, Suite 105 | Litchfield Park, AZ 85340 | (623) 935-0422 | www.mylittlesunbeams.com | info@mylittlesunbeams.com

Revised: November 2014



Little Sunbeams Preschool
A Reggio Emilia Inspired School

Five Principles

Emergent Curriculum

We believe that children's natural ability as learners is enhanced when learning is self-initiated and incorporates own interests, styles, and needs. Themes and daily lessons are developed strategically from the observations in everyday-interactions among students, teachers, and parents.

Representing Learning

Essential to the Reggio Emilia approach is the opportunity a child is given to represent his or her experience in the learning process in his or her own way. Tools such as art mediums, language, drama, music, movement, and other materials in the environment are accessible to all children to help them express and make their learning experience visible each day.

Meaningful relationships

We believe that cognitive development is advanced when children are consistently interacting with peers, teachers, and parents in positive, constructive, and collaborating ways. As children are encouraged to dialogue, record and share observations, compare outcomes and ideas, and solve problems through group work as well as home/community-based activities, they form meaningful as well as lasting and trusting relationships.

Teachers as learners

At Little Sunbeams Preschool, teachers are naturally inclined to learn more as they embark in facilitating children's new discoveries and learning. Teachers are constantly investigating best practices to promote in children more curiosity, more "languages" for expressing and representing daily learning.

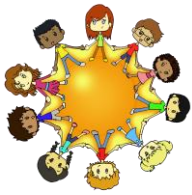
Documentation

Documenting key observations, progress, creative representations, and verbal expressions is crucial as we want to impact the learning of children as well as our own learning as teachers. Daily journals, photographs, and formal assessments are a few of several tools we use to help us reflect on the process, cycle, and patterns of learning and teaching.

Where every child shines in 100 ways and more!

4850 N. Litchfield Road, Suite 105 | Litchfield Park, AZ 85340 | (623) 935-0422 | www.mylittlesunbeams.com | info@mylittlesunbeams.com

Revised: November 2014



Little Sunbeams Preschool
A Reggio Emilia Inspired School

The Learning Environment

In the Reggio Emilia approach, the environment is a child's ***third*** teacher. As such, it needs to integrate elements that target cognitive, social, linguistic, and physical development. At Little Sunbeams, we take careful measures to ensure our environment displays and highlights student creations; incorporates natural materials that allow children to manipulate, appreciate, and respect what nature offers us; and is organized in ways that promote beauty, invite children to choose with a purpose, and provoke children's curiosity and creativity.

Atelier (studio)

At the heart of our school program is the atelier. It is the place where our little sunbeams can explore, experiment, and express learning and creativity with numerous art mediums including clay, paint, water colors, pastels, beads, fabric, etc. They may choose to be self-directed to work on self-initiated projects or be guided by our ***Atelierista (studio teacher)*** to represent investigations meaningful to the child and his peers.

Casita

Our picket-fence playhouse is equipped with baby dolls, carriages, dress-up clothes, and kitchen toys to stimulate dramatic play. Mi casita also turns into a stage for a number of performances children participate in during the year to share with our parents: The Thanksgiving story, the Polar Express, Mother's Day dance recital, and end of the year Graduation.

Nature

A Science-enriched center where children are invited to manipulate elements from nature: window garden to monitor, observe, and report; water and sand for tactile and sensory stimulation; rocks and pebbles for weighing, measuring, and patterning. ***Nature*** also houses a few favorite (safe) friends: guinea pigs, turtles, fish, etc. Children love to pet, bathe, and feed our friends!

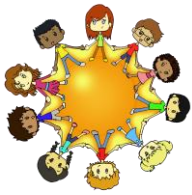
Calendar Centers

This center is found in our Spanish and in our English classrooms and it's the gathering place for circle time. It displays calendar numbers, weather symbols, birthday pictures, counting tally marks or items, pattern pictures. They come equipped with "pointers" for children to play "teacher" during independent play time.

Where every child shines in 100 ways and more!

4850 N. Litchfield Road, Suite 105 | Litchfield Park, AZ 85340 | (623) 935-0422 | www.mylittlesunbeams.com | info@mylittlesunbeams.com

Revised: November 2014



Little Sunbeams Preschool
A Reggio Emilia Inspired School

Construction Zone

Blocks, connecting cubes, gears, rods, geoboards, pattern blocks, lacing pictures, work bench with real tools and lots more manipulatives for children to create structures, patterns, and develop problem solving skills, design principles, and strengthen fine motor abilities.

ABC Centers

Little Sunbeams integrates the whole language approach by emphasizing the development of all the components of language: speaking, listening, reading and writing. The ABC centers are designed in both English and Spanish and serve as an area for direct teaching as well as independent learning. It's equipped with magnetic letters, letter puzzles, writing tools, abc charts, puppets, and books, individual size and large dry-erase boards, and "pointers" for children and teachers to point while they read letters, the word wall, and children's names. Another place where children play "teacher".

Music Corner

Musical instruments are displayed accessibly for children to explore and manipulate: noise makers, shakers, maracas, cans, rhythm sticks, toy keyboard, and a baby grand piano. A great place to gather and have a sing-a-long or a musical parade!

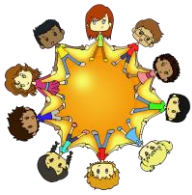
Library

Every room in Little Sunbeams Preschool has a dedicated corner for reading and displays books that enforce themes of study, as well as favorite books children love to read over and over again. However, the majority of our books will be found in our library. It houses English and Spanish books, books authored by children, books on tape, and books appropriate for all children. Every child picks a book or two (one in each language) to read at home each night and record in a monthly log; a daily routine children love to do!

Where every child shines in 100 ways and more!

4850 N. Litchfield Road, Suite 105 | Litchfield Park, AZ 85340 | (623) 935-0422 | www.mylittlesunbeams.com | info@mylittlesunbeams.com

Revised: November 2014



Little Sunbeams Preschool
A Reggio Emilia Inspired School

Curricular Overview by Age Group

Two-year-old

Our two-year-old curriculum focus is to involve your child in discovering his/her environment through different engaging centers including water/sand, music & movement, drama, literacy, tallier (art studio), and construction. Each of these centers is designed to channel two-year-olds' energy and curiosity toward discovering important elements in our environment such as water, soil, sound, movement, shapes, and language.

Early Preschool (2-3 years)

Little Sunbeams Early Preschool curriculum focuses on exploring themes of your child's own interests, listening to your child's questions, and developing readiness skills for Preschool success. Your child will choose from several learning centers to explore in more depth cognitive principles such as numbers, sequencing, designing, constructing, and patterns.

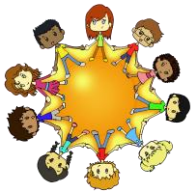
Preschool (3-4 years)

Our Preschool curriculum emphasizes project-based learning using various forms of expression to document your child's learning such as sculpting, painting, drawing, dramatic plays, and poetry. Your child will develop a strong sense for his/her natural languages of learning, and strengthen communication skills.

Where every child shines in 100 ways and more!

4850 N. Litchfield Road, Suite 105 | Litchfield Park, AZ 85340 | (623) 935-0422 | www.mylittlesunbeams.com | info@mylittlesunbeams.com

Revised: November 2014



Little Sunbeams Preschool
A Reggio Emilia Inspired School

Pre-Kindergarten (4-5 years)

The emphasis in the Pre-Kindergarten curriculum is to develop fine motor skills, and literacy skills for success in Kindergarten. Your child will continue to experience project-based learning using various forms of expressions to document their learning such as sculpting, painting, drawing, dramatic plays, poetry, and writing.

- All children will participate in at least one center where Spanish will be the main language of communication.
- When developmentally ready, your child may participate in our phonics reading program.

Children will be assigned to classes based on their age as of September 1 and they will stay in that class until the conclusion of the year. However, should a class not reach a capacity of 6 or more, Little Sunbeams Preschool reserves the right to cancel the class and move enrolled children to another class. Mid-year enrollment is upon availability only.

Where every child shines in 100 ways and more!

4850 N. Litchfield Road, Suite 105 | Litchfield Park, AZ 85340 | (623) 935-0422 | www.mylittlesunbeams.com | info@mylittlesunbeams.com

Revised: November 2014